

版本号：2003 版 北京
Version of 2003, Beijing



干式空心电抗器技术手册

DRY TYPE AIR CORE REACTORS



全 员 参 与
持 续 改 进
质 量 第 一
用 户 至 上



北 京 电 力 设 备 总 厂
BEIJING POWER EQUIPMENT GROUP

WWW.BPEG-USA.COM

简介

Brief Introduction

北京电力设备总厂(BPEG)是我国电力系统最大的综合性设备制造企业,下设的特种电器事业部专业从事干式空心电抗器、阻波器、结合滤波器的生产制造。BPEG于1986年独家引进了加拿大Trench Electric公司阻波器制造技术,并在此基础上自行研制开发出干式空心电抗器,为国内最早的制造厂家。工厂拥有一批从国外引进的先进制造设备和检测仪器。

BPEG坚持“全员参与、持续改进、质量第一、用户至上”的方针,以雄厚的技术开发力量、先进的施工工艺、优良的工艺装备、完善的管理机制、高素质的职工队伍、强大的生产能力,构成了BPEG为用户提供优质产品的坚实基础。

BPEG的空心电抗器产品除满足中国国家标准外,还可以按IEC国际标准、美国ANSI标准或其它国家标准设计制造。品种齐全,包括空心并联电抗器、串联电抗器、限流电抗器、分裂电抗器、滤波电抗器、平波电抗器、阻尼电抗器、防雷线圈、试验电抗器、启动电抗器等,广泛应用于电力、钢铁、有色冶金、化工、电气化铁路、造纸等行业。

BPEG开发的单台容量20000kVA电压等级66kV的空心并联电抗器已于2000年12月在北京顺义500kV变电站投入运行,填补了国内大容量、高电压等级空心并联电抗器的空白。

BPEG始终坚持以用户为中心,以市场为导向。对产品实行终身保修,为用户提供优质产品和快捷、热情、周到的服务是BPEG真诚的承诺。

Beijing Power Equipment Group (BPEG) has become the largest synthetical enterprise among those of electric power industry in China. The Special Electric Equipment Works, as a member of BPEG, is the main manufacturer of air core reactor, line trap and coupling filter in China. BPEG introduced a complete set of modern advanced manufacture technique of line trap from Trench Electric Corporation Ltd., Canada in 1986, and based on which series of highly reliable dry-type air-core reactors were developed by ourselves. BPEG owns a lot of advanced manufacture equipments and measuring instruments imported from overseas developed countries

BPEG has the quality policy of "All staff participate, Improve perpetually, Quality as the first, Customer being supreme". Having the firm base of strong R&D ability, advanced process technology, good manufacturing equipments, complete management system, excellent staff and a powerful throughput, BPEG can provide premium products for worldwide customers.

Our products comply with the national standard of China, and besides, we can design and manufacture the products according to the IEC standard, ANSI standard or the standards of other countries. BPEG has a wide range of products including Air core Shunt Reactors, Series Reactor, Current-limiting Reactor, Splitting Reactors, Filter Reactors, Smoothing Reactor, Damping Reactors, lightning Coil, Test Lab Reactors, Motor Starting Reactors, etc. Which are broadly used in the industry of electric, steel, non-ferrous metallurgical, chemistry, electrified railway and papermaking.

BPEG has developed the air core shunt reactor with the single phase capacity of 20000kVA and voltage level of 66kV, which was put into operation at the 500kV substations in Shun Yi district, Beijing. The reactor has filled up the shortage of those of high capacity and voltage level in China.

BPEG believe the customer is always the focus of our attention and our strategy must be market-led. It is BPEG's sincere commitment to provide our customers the high quality products with life time maintenance guarantee and fast, enthusiastic and comprehensive service.



目 录

Content

	产品简介	<i>Brief Introduction</i>	1
	使用条件	<i>Operation Conditions</i>	3
	主要订货参数	<i>Order Information</i>	3
	产品型号含义	<i>Type Meaning</i>	5
	产品安装	<i>Mounting of Reactors</i>	8
	技术参数列表	<i>Technical Parameters Table</i>	11



干式空心电抗器

产 品 简 介 Brief Introduction

北京电力设备总厂制造的电抗器采用多层并联绕组、干式空心结构。每个绕组由小截面绝缘铝导线并联绕制而成，电抗器整体由环氧玻璃纤维包封，经高温固化，每层绕组的导线引出端都焊接在上下铝合金星形支架上，采用自然空气对流冷却方式，产品外表面涂抗老化、抗紫外线的绝缘漆。上述结构决定了这种电抗器具有损耗小、强度高、噪音低、安装方便、维护简单等显著优点。产品设计寿命长达 30 年。

北京电力设备总厂不仅生产电感固定的电抗器，还可以提供电感抽头可调或连续可调的电抗器，电感调节范围为 $\pm 5\%$ 或更大。

电抗器执行标准：GB10229、IEC289 - 88 及用户要求的其他相关标准。

北京电力设备总厂的干式空心电抗器应用广泛，产品类型有：并联电抗器、可控硅控制并联电抗器、串联电抗器、电气化铁路专用串联电抗器、滤波电抗器、限流电抗器、平波电抗器、试验电抗器、阻尼电抗器、分裂电抗器、中性点接地限流电抗器、电动机启动电抗器、均荷电抗器、防雷线圈等。

各类电抗器用途如下：

并联电抗器

并联连接在 500kV 和 220kV 变电站低压绕组侧，用于长距离轻负载输电线路或地下电缆容性无功补偿。

可控硅控制并联电抗器用于静补装置中，能够动态改变无功容量，维护电压稳定。

串联电抗器

在并联补偿电容器装置中，与并联电容器串联连接用以抑制谐波电压放大，减少系统电压波形畸变和限制电容器回路投入时的合闸涌流。

滤波电抗器

与并联电容器组串联使用，组成谐振回路，滤除指定的高次谐波。

限流电抗器

串联连接在系统上，在系统发生故障时，用以限制短路电流，使短路电流降至其后设备的允许值。

平波电抗器

正常情况下，用以减少直流系统中电压和电流的谐波分量，故障情况下能有效抑制故障电流的上升速度，限制短路电流的峰值。常用在高压直流输电系统或与钢铁、有色冶金业的大型整流馈电式直流电动机串联使用。

BPEG reactor is dry type air core construction with multi-layer of windings paralleled. Each Winding consists of small-section parallel-insulated aluminum wires, the whole reactor is integrated by epoxy fiberglass hardened in drying store, the leading-out ends of each winding layer are welded to upper and lower spider arms, the reactor is cooled with neutral air cooling, the surface of reactor is painted with resist aging, ultraviolet-proof insulation coatings. All these make BPEG reactors have many advantages, such as low loss, high strength, low noise, being easy to mount and simple for maintenance. Their life expectancy is more than 30 years.

In addition to the normal fixed inductance type of coil, BPEG also manufacture Adjustable Reactor including multi-tapped adjustable ones and continuous adjustable ones. Generally, the variation in inductance of coil is $\pm 5\%$ or extended.

Application Standard: GB10229, IEC289-88 or other concerned standards on request.

BPEG Reactors have wide applications. Types of them including: Shunt Reactor, Thyristor Controlled Shunt Reactor (TCR), Series Reactor, Special Series Reactor used in Electric Railway, Current-limiting Reactor, Filter Reactor, Smoothing Reactor, Test Lab Reactor, Damping Reactor, Splitting Reactor, Neutral-Grounding Current-limiting Reactor, Starting Reactor, Load-sharing Reactor, Lighting Coils, etc.

Kinds of application are described as below.

Shunt Reactors

They are parallel connected with the transformer tertiary winding in 220kV or 500kV Substation. They are used to compensate for the capacitive VAR reactance of the underground cable in transmission line of long distance and low load.

Thyristor Controlled Shunt Reactors (TCR)

They are used in static VAR compensating device and can dynamically change the VAR compensating power and keep the voltage stability.

Series Reactors

They are series connected with VAR compensating shunt capacitor bank. They are used to restrain harmonic voltages, reduce distortion of system voltage and limit inrush current when capacitor circuit is putted into network for operation.

Filter Reactors

They are series connected with filter capacitor bank to form resonant circuit, which can filter specified harmonic currents.

试验电抗器

应用在高压试验室中,为满足高压试验的各种需求而设计的各种用途的电抗器。

阻尼电抗器

与电容器串联,专门用来限制电容器组投入交流电网时的涌流。

分裂电抗器

在配电系统中,正常运行时其电感很小,一旦出现故障,则对系统呈现出较大的阻抗以限制故障电流,这种电抗器被使用在所有情况下保持隔离的两个分离馈电系统。

中性点接地限流电抗器

接在高抗或变压器三相中性点和地之间,用于将系统接地故障时线对地电流限制在适当数值的单相电抗器。



电动机起动电抗器

与交流电动机串联连接,用以限制电动机的起动电流,起动后电抗器即被切除。

均荷电抗器

用于平衡并联电路的电流。

防雷线圈

即小容量变电所及直配电机雷电防护特种电抗线圈。与电力线串联,接于变电所线路入口,用以降低雷电侵入波陡度,限制雷电流幅值,同时还兼有限制短路电流的作用。

Current-limiting Reactors

They are series connected with power system (bus, line and load) They can reduce the short circuit current to allowable level for other equipment.

Smoothing Reactor

It is a single phase coil. It is used to reduce the magnitude of the harmonic currents or voltage in a DC system, and restrain the run speed and the peak value of short circuit current. They are used in HVDC transmission system and also series connected with large rectification-feed DC motor in steel and non-ferrous metallurgical plant.

Test Lab Reactors

They are installed in high voltage test lab, and are kinds of reactors, which are designed to satisfy variable need of high voltage electric system.

Damping Reactors

They are series connected with capacitor bank. They are specially used to limit surge currents when capacitor circuit is switched into AC network for operation.

Splitting Reactors

In distribution system, they provide a desirable low inductance under normal conditions and a high reactance under fault conditions to limit the short circuit current. They consists of two coils, and are used in two separating-feed power systems which are isolated under any conditions.

Neutral-Grounding Current-Limiting Reactor

It is a single coil. It is connected between the neutral of HV shunt reactors or transformer and ground to limit the line to ground fault current to specified level.

Motor Starting Reactors

They are connected in series with the AC motor to limit its starting current and cut off after starting.

Load Sharing Reactors

They are used to balance the current of parallel circuit.

Lightning Coil

They are particular lightning defences for low capacity power station and direct feeding generator. They are connected in series with power line at the entrance of power station to reduce the steepness and peak value of lightning impulse wave, and also limit the short circuit current.



干式空心电抗器

产 品 简 介 Brief Introduction

使用条件

1. 使用地点：户内或户外
2. 环境温度：-40℃ ~ +40℃ 或 -25 ~ +45℃
(根据用户要求)
3. 海拔高度：≤ 1000m
4. 最大风速：35m/s
5. 相对湿度：≤ 90%
6. 抗地震能力：水平：0.3g
垂直：0.15g
(根据用户要求)
7. 户内使用时注意通风散热。
8. 安装地点必须清洁，无有害气体、蒸汽、导电性及爆炸性尘埃。

注：如果有特殊要求，请直接与BPEG联系，愿竭诚满足您的要求。

OPERATING CONDITIONS

1. Operating site : Outdoor or Indoor
2. Ambient temperature:-40℃ ~ +40℃ or -25℃ ~ +45℃
(Upon Request)
3. Altitude: ≤ 1000m
4. Maximum wind speed: 35m/s
5. Relative humidity: ≤ 90%
6. Earthquake acceleration: Horizontal:0.3g
Vertical:0.15g
(Upon Request)
7. Pay attention to ventilation and coolness for indoor use.
8. Mounting spot must be clean without harmful gas, steam and conductive or explosive dust.

NOTE: Please contact with BPEG if you have other special requirements.

主要订货参数

并联电抗器

1. 额定频率
2. 系统电压
3. 额定电压
4. 单相额定容量
5. 最高连续运行电压
6. 额定电抗值
7. 绝缘水平
8. 绝缘耐热等级
9. 额定损耗
10. 使用地点：户内或户外
11. 安装方式及出线角度

ORDER INFORMATION

SHUNT REACTOR

1. Rated Frequency
2. Rated System Voltage
3. Rated Voltage
4. Rated Capacity of Single Phase
5. Maximum Continuous Operation Voltage
6. Rated Reactance
7. Insulation Level
8. Thermal Class of Insulation
9. Rated Losses
10. Outdoor or Indoor Mounting
11. Mounting and Terminal Orientation

串联电抗器

1. 额定频率
2. 系统电压
3. 配套电容器额定电压
4. 额定电抗率
5. 单相额定容量
6. 额定电流
7. 短时电流及持续时间
8. 额定电抗值
9. 绝缘水平
10. 使用地点：户内或户外
11. 安装方式及出线角度

SERIES REACTOR

1. Rated Frequency
2. Rated System Voltage
3. Rated Voltage of Shunt Capacitor
4. Reactance Percent
5. Rated Capacity of Single Phase
6. Rated Current
7. Rated Short-Time Current and Duration
8. Rated Reactance
9. Insulation Level
10. Outdoor or Indoor Mounting
11. Mounting and Terminal Orientation

限流电抗器

1. 额定频率
2. 系统电压
3. 额定电抗率
4. 额定电流
5. 额定短时电流及持续时间
6. 动稳定电流
7. 额定电抗值
8. 绝缘水平
9. 使用地点：户内或户外
10. 安装方式及出线角度

CURRENT- LIMITING REACTOR

1. Rated Frequency
2. Rated System Voltage
3. Reactance Percent
4. Rated Current
5. Rated Short-Time Current and Duration
6. Asymmetrical Peak Value of Current
7. Rated Reactance
8. Insulation Level
9. Outdoor or Indoor Mounting
10. Mounting and Terminal Orientation

滤波(可调)电抗器

1. 系统电压
2. 额定工业频率
3. 额定工频电流
4. 额定工频电压
5. 额定电感
6. 额定品质因数
7. 额定短时电流及持续时间
8. 额定调谐频率
9. 额定调谐频率电流
10. 绝缘水平
11. 使用地点：户内或户外
12. 安装方式及出线角度
13. 可调电抗器额定电感调节范围

FILTER (ADJUSTABLE) REACTOR

1. System Voltage
2. Rated Power Frequency
3. Rated Current at Power Frequency
4. Rated Voltage at Power Frequency
5. Rated Inductance
6. Rated Q-Factor
7. Rated Short-Time Current and Duration
8. Rated Harmonic Frequency
9. Rated Current at Harmonic Frequency
10. Insulation Level
11. Outdoor or Indoor Mounting
12. Mounting and Terminal Orientation
13. Adjustable Range of Rated Inductance for Adjustable Reactor

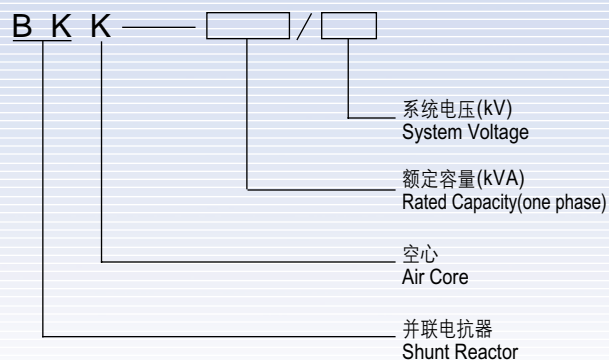




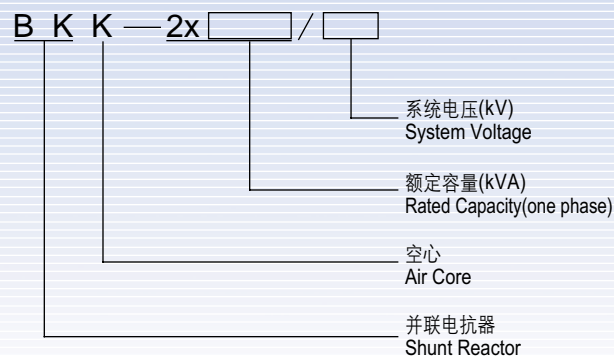
干式空心电抗器

型号含义 Type Meaning

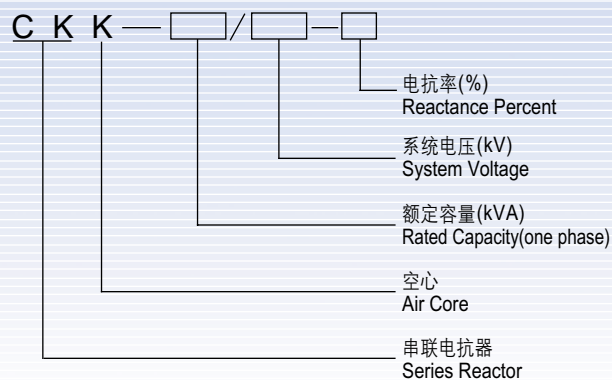
1、BKK 系列干式空心并联电抗器 Shunt Reactor



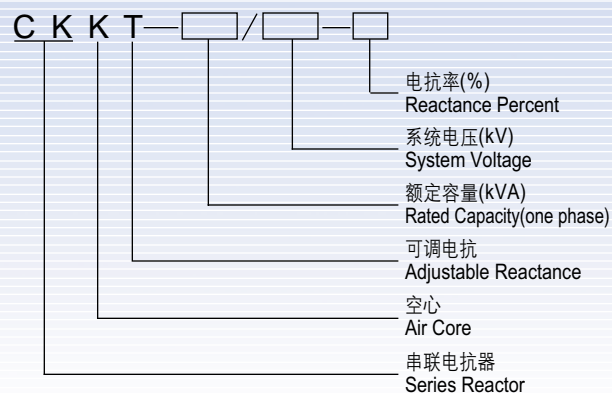
适用于相控型 (TCR) Thyristor Controlled Shunt Reactor (TCR)



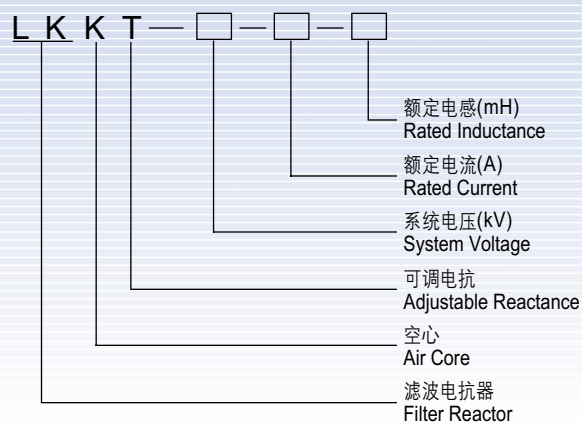
2、CKK 系列干式空心串联电抗器 Series Reactor



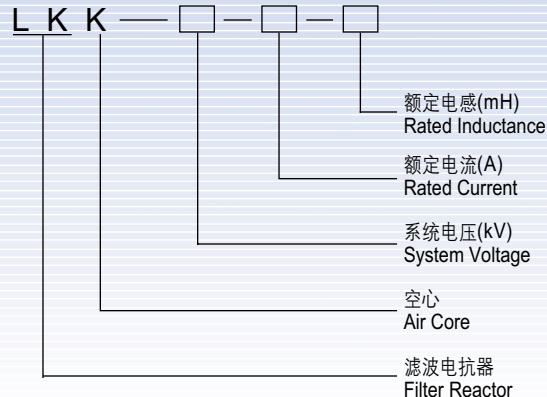
适用于可调电抗型 Applicable for Adjustable Reactance



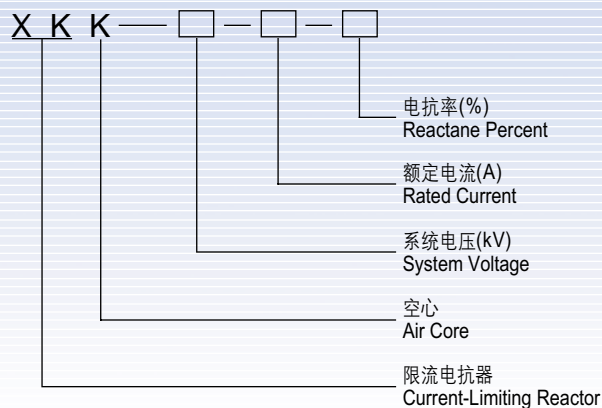
3、LKKT 系列干式空心滤波电抗器 Filter Reactor



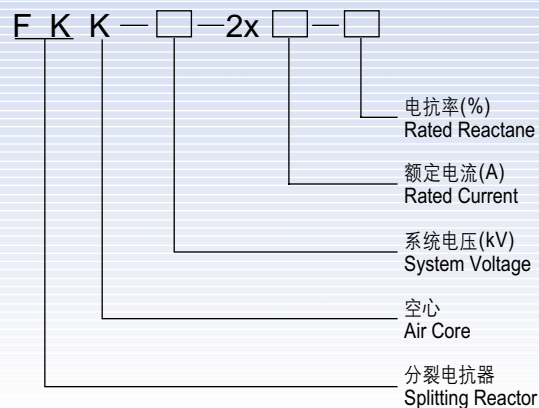
适用于电感固定型 Applicable for Fixed Reactance



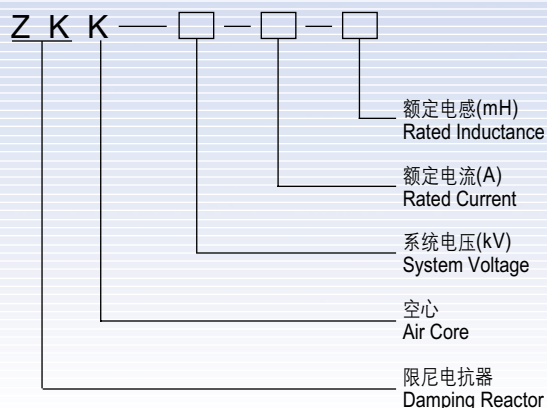
4、XKK 系列干式空心限流电抗器 Current-Limiting Reactor



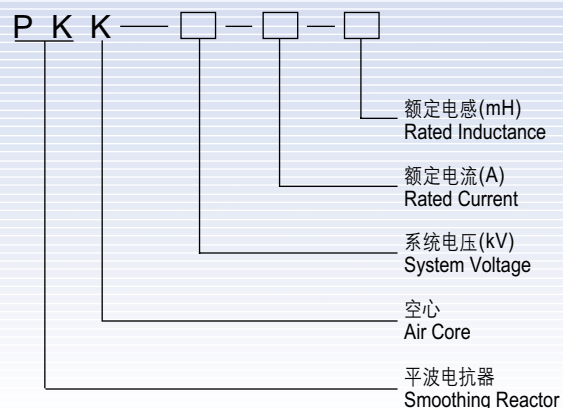
5、FKK 系列干式空心分裂电抗器 Splitting Reactor



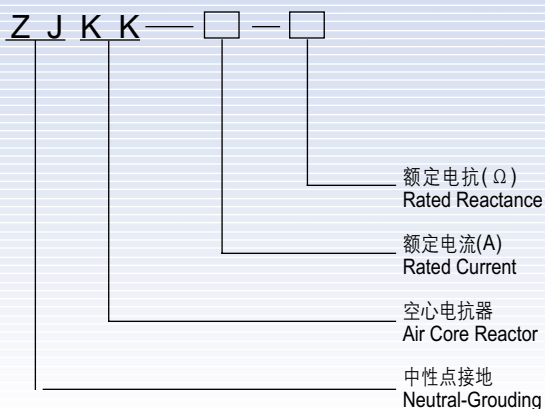
6、ZKK 系列干式空心阻尼电抗器 Damping Reactor



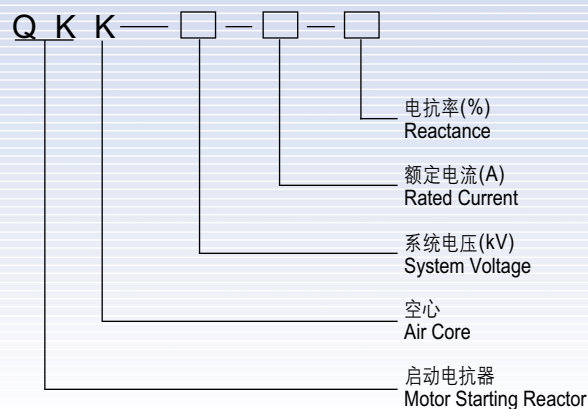
7、PKK 系列干式空心平波电抗器 Smoothing Reactor



8、ZJKK 系列干式空心中性点接地电抗器 Neutral-Grounding Reactor



9、QKK 系列干式空心启动电抗器 Motor Starting Reactor

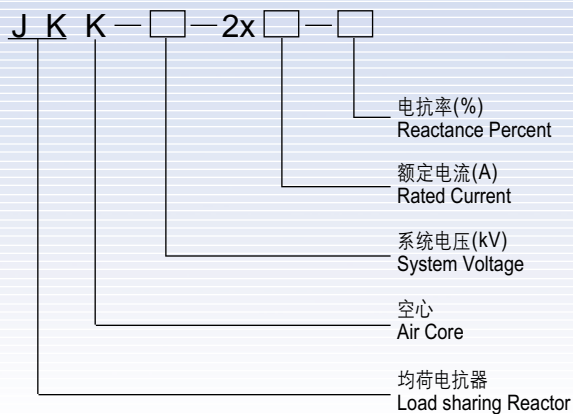




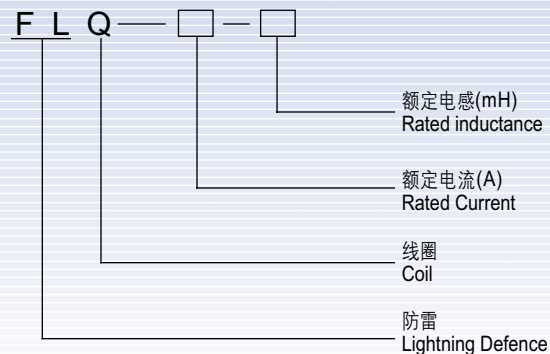
干式空心电抗器

Type Meaning

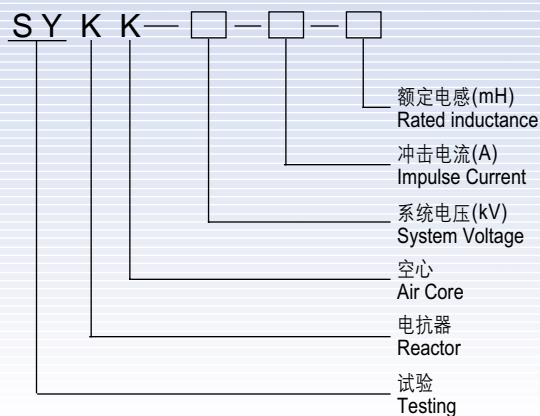
10、JKK 系列干式空心均荷电抗器 Load Sharing Reactor



11、FLQ 系列干式空心防雷线圈 Lightning Coil



12、SYKK 系列干式空心试验电抗器 Testing Reactor



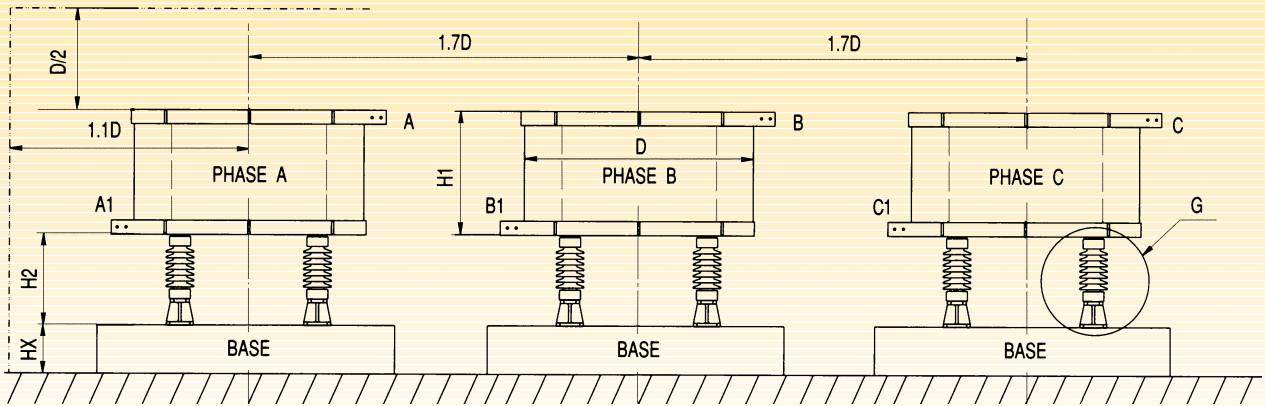
1997 年荣获 ISO9001 质量体系认证证书 2000 年通过复审

Certificate of ISO9001 Quality System acquired in 1997 and reviewed in 2000



三相水平一字形布置 Three-phase in a line arrangement

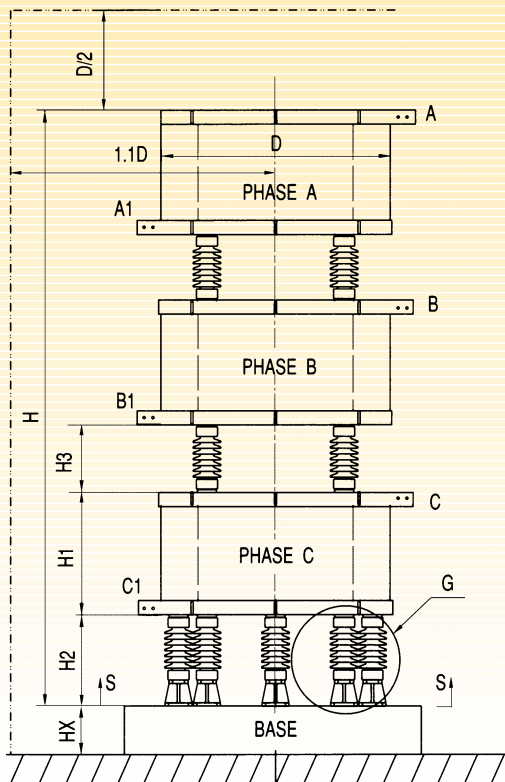
不考虑有闭合线匝和其它电抗器的无铁磁物空间
Minimum magnetic clearance



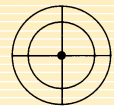
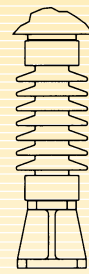
三相叠放 Three-phase stacked arrangement

不考虑有闭合线匝和其它电抗器的无铁磁物空间
Minimum magnetic clearance

吊臂数目(俯视)
arms (top view)

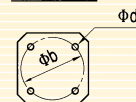


G View



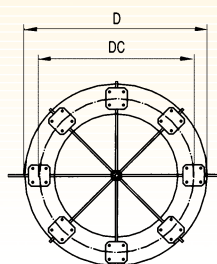
4.吊臂
four arms

P-P View



6.吊臂
six arms

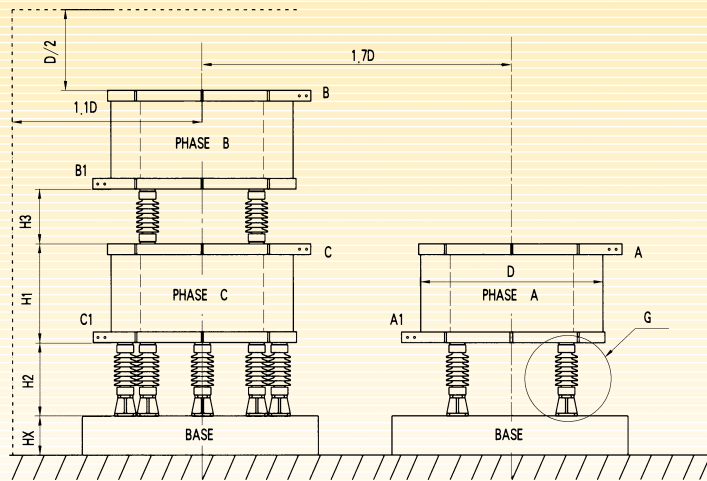
S-S View



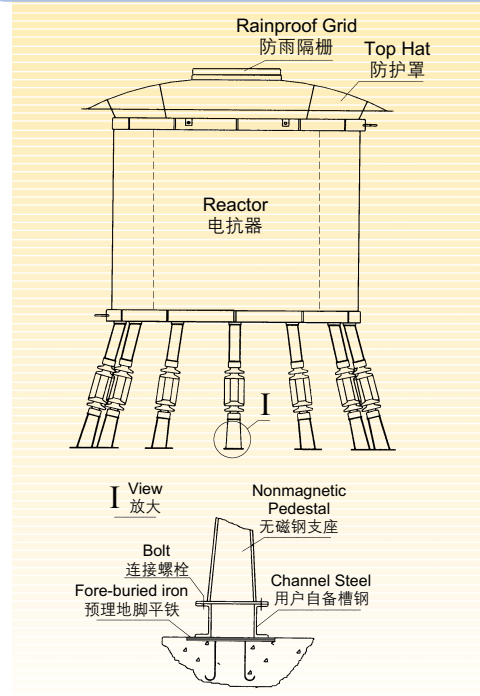
8.吊臂
eight arms

两相叠放 一相平放
Two-phase stacked and one phase single arrangement

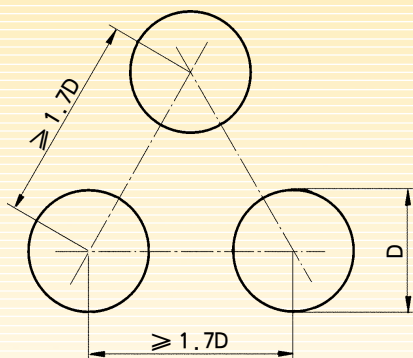
不考虑有闭合线匝和其它电抗器的无铁磁物空间
Minimum magnetic clearance



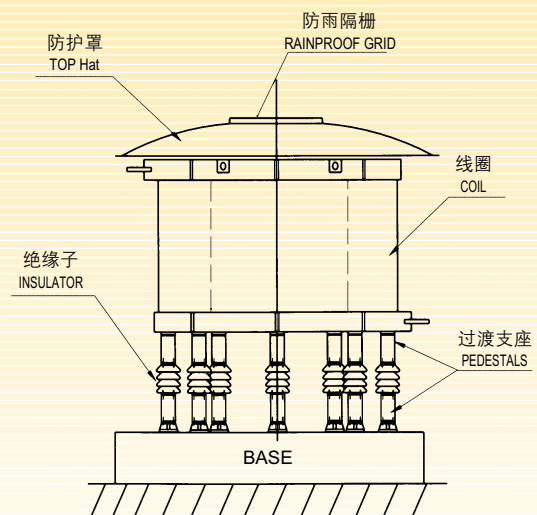
户外型斜支腿安装并联电抗器
Outdoor Gradient post mounting of shunt reactor



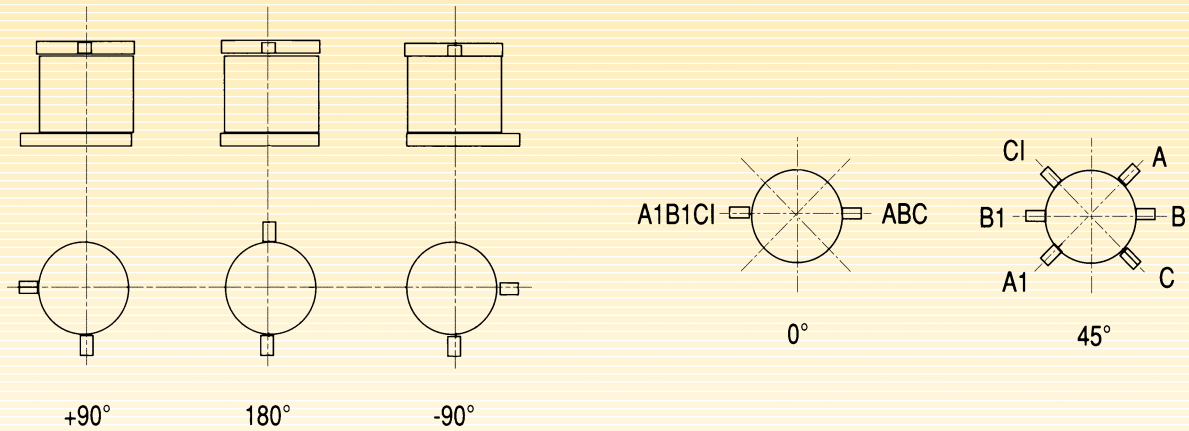
三相水平品字形布置
Three-phase in a triangle arrangement



户外型并联电抗器安装图
Outdoor mounting of shunt reactor

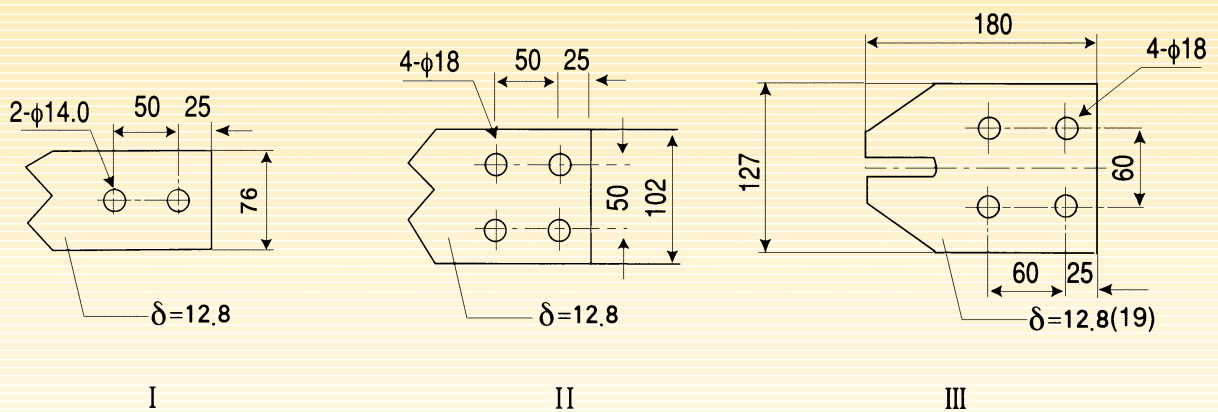


接线端子出线夹角 Terminal orientation



注： 订货未注明进出线夹角时，进出线按 180° 供货，三相叠放时，相间夹角按 45° 供货
 Note: The 180° is preferable if the terminal orientation for one-phase is not specified.
 The 45° is preferable if the terminal orientation for three-phase stacked is not specified

接线端子形状与尺寸 Terminal details



注： 接线端子材质为铝材
 Note: The material of the terminals is Aluminum

BKK并联电抗器系列表 BKK series Technical Data for Shunt Reactor

序号 No	型号 Type	系统 电压 (kV)	额定 容量 (kVA)	额定 电压 (kV)	额定 电流 (A)	额定 电抗 (Ω)	绕组 外径 D (mm)	绕组 高度 H1 (mm)	损 耗 75 (kW)	绕组 重量 (kg)	安装方式(1) Installation				安装方式(2) Installation			
											安 装 支 点 数 support points	安 装 节 径 DC (mm)	安 装 总 重 量 (kg)	安 装 总 高 H(mm)	安 装 支 点 数 support points	安 装 节 径 DC (mm)	安 装 总 重 量 (kg)	安 装 总 高 H (mm)
1	BKK - 20000 / 66	66	20000	66/ $\sqrt{3}$	525	72.6	3030	3256	70	9018	18	2450 / 3650	11224	5466	8	2700	11128	7687
2	BKK - 16700 / 66		16700	66/ $\sqrt{3}$	438	86.9	3040	3256	65	8089	16	2530 / 3650	10075	5466	8	2720	10199	7687
3	BKK - 15000 / 66		15000	66/ $\sqrt{3}$	394	96.8	3020	3256	62	7618	12	3650	9164	5466	6	2670	9248	7687
4	BKK - 10000 / 66		10000	66/ $\sqrt{3}$	262	145.2	2380	3054	50	5824	12	3000	7360	5214	6	2020	7444	7485
5	BKK - 6670 / 66		6670	66/ $\sqrt{3}$	175	217.7	2420	3054	42	4622	8	2160	5706	5214	6	2060	6242	7485
6	BKK - 20000 / 35	35	20000	35/ $\sqrt{3}$	990	20.4	2830	2236	66	8087	12	3350	9393	4378	8	2450	10045	6599
7	BKK - 18884 / 35		18884	34/ $\sqrt{3}$	962	20.4	2770	2226	65	7650	12	3330	8956	4368	6	2390	9166	6589
8	BKK - 16700 / 35		16700	35/ $\sqrt{3}$	826	24.5	2758	2226	63	6882	12	3330	8088	4368	6	2390	8398	6589
9	BKK - 15000 / 35		15000	35/ $\sqrt{3}$	742	27.2	2770	2246	59	6416	12	3310	7722	4388	6	2370	7932	6609
10	BKK - 13333 / 35		13333	35/ $\sqrt{3}$	660	30.6	2700	2246	56	5883	12	3270	7189	4388	6	2330	7399	6609
11	BKK - 10000 / 35		10000	35/ $\sqrt{3}$	495	40.8	2260	2084	48	5145	8	1990	5781	3721	4	1820	6069	6245
12	BKK - 6670 / 35		6670	35/ $\sqrt{3}$	330	61.2	2120	2014	37	3886	8	1860	4522	3651	4	1700	4810	6175
13	BKK - 5000 / 35		5000	35/ $\sqrt{3}$	247	81.7	2110	2024	32	3205	6	1850	3727	3661	4	1690	4129	6255
14	BKK - 3340 / 35	3340	35/ $\sqrt{3}$	165	122.3	2200	2024	28	2507	6	1940	3029	3661	4	1770	3431	6255	
15	BKK - 20000 / 20	20	20000	20/ $\sqrt{3}$	1732	6.7	2830	2086	68	8128	12	3320	9170	4081	8	2500	9916	6297
16	BKK - 16700 / 20		16700	20/ $\sqrt{3}$	1446	8.0	2750	2066	62	6837	12	3240	7879	4061	6	2380	8353	6277
17	BKK - 15000 / 20		15000	20/ $\sqrt{3}$	1299	8.9	2720	2036	58	6250	12	3210	7292	4031	6	2350	7766	6247
18	BKK - 10000 / 20		10000	20/ $\sqrt{3}$	866	13.3	2380	1934	49	4779	8	2120	5475	3769	4	1940	5692	6093
19	BKK - 6670 / 20		6670	20/ $\sqrt{3}$	578	20.0	2250	1954	37	3808	8	1990	4433	3589	4	1820	4721	6113
20	BKK - 5000 / 20		5000	20/ $\sqrt{3}$	433	26.7	2110	1934	33	3177	6	1960	3671	3519	4	1690	4070	6043
21	BKK - 3340 / 20		3340	20/ $\sqrt{3}$	289	39.9	1960	1724	24	2364	6	1690	2848	3209	4	1540	3244	5733
22	BKK - 15000 / 10	10	15000	10/ $\sqrt{3}$	2598	2.2	2780	1776	57	6034	12	3270	7052	3766	6	2410	7550	5885
23	BKK - 10000 / 10		10000	10/ $\sqrt{3}$	1732	3.3	2440	1814	49	4610	8	2180	5306	3649	4	1990	5510	5873
24	BKK - 6670 / 10		6670	10/ $\sqrt{3}$	1155	5.0	2200	1714	37	3601	8	1940	4206	3299	4	1770	4481	5723
25	BKK - 5000 / 10		5000	10/ $\sqrt{3}$	866	6.7	2140	1764	32	3005	6	1870	3499	3349	4	1720	3885	5773
26	BKK - 3340 / 10		3340	10/ $\sqrt{3}$	579	10.0	1870	1694	25	2299	6	1610	2770	3079	4	1470	3179	5703
27	BKK - 2400 / 10	2400	10/ $\sqrt{3}$	416	13.9	1820	1744	23	1893	6	1610	2223	3116	4	1400	2512	5590	

1. 安装方式为单相平放。其中，
安装方式(1)为常规支撑结构，
安装方式(2)为2.5米玻璃钢高支腿结构；
2. 制造厂还可以根据用户提出的特殊要求进行设计制造；
3. 以上数据供用户设计部门参考，制造厂将保留对以上数据的变动权利。

1. Installation is for single phase arranged in one line or in an equilateral triangular configuration.
Installation (1) is regular support construction,
Installation (2) is of 2.5M Epoxy Post.
2. BPEG can design and manufacture in accordance with Customers' special requests.
3. Above parameters are reference to Customers' design department, BPEG reserves the right to change and update.

干式空心电抗器

Technical Parameters Table

技 术 参 数



CKK串联电抗器系列表 CKK Series Technical data for Series Reactor

序号 No	电容器 容量 kVAr	型 号 Type	系统 电压 kV	额定 电流 A	额定 电抗	外径 D mm	高度 H1 mm	总高 H mm	线圈 重量 kg	总重 kg	损耗值 kW	安装节 径DC mm	支 点 Support Points
1	1200	CKK-20/6-5	6	104.7	1.82	810	562	2979	135	579	0.88	650	6
2	1200	CKK-24/6-6		104.8	2.19	800	622	3159	146	612	1.04	650	6
3	1200	CKK-48/6-12		96.2	5.19	1040	712	3429	194	756	1.73	900	6
4	1500	CKK-25/6-5		131	1.46	810	562	2979	139	591	1.06	650	6
5	1500	CKK-30/6-6		131	1.75	860	572	3009	154	636	1.18	700	6
6	1500	CKK-60/6-12		120.2	4.15	1100	632	3265	212	810	1.97	950	6
7	1800	CKK-30/6-5		157.1	1.22	820	552	2949	141	597	1.23	650	6
8	1800	CKK-36/6-6		157.2	1.46	870	562	2979	156	642	1.37	700	6
9	1800	CKK-72/6-12		144.3	3.46	1020	622	3159	228	858	2.16	900	6
10	2400	CKK-40/6-5		209.4	0.91	960	602	3099	174	696	1.52	800	6
11	2400	CKK-48/6-6		209.6	1.09	960	652	3249	188	738	1.73	850	6
12	2400	CKK-96/6-12		192.4	2.59	1100	612	3205	297	1131	2.66	900	8
13	3000	CKK-50/6-5		261.8	0.73	1020	552	2949	192	750	1.77	850	6
14	3000	CKK-60/6-6		262	0.87	1020	592	3069	207	832	1.98	850	6
15	3000	CKK-120/6-12		240.5	2.08	1070	592	3145	318	1188	2.72	850	8
16	3600	CKK-60/6-5		314.2	0.61	1040	542	2919	212	810	1.80	850	6
17	3600	CKK-72/6-6		314.4	0.73	1040	582	3039	231	867	2.02	850	6
18	3600	CKK-144/6-12		288.6	1.73	1180	732	3656	363	1323	3.07	1000	8
19	4200	CKK-70/6-5	366.5	0.52	940	592	3069	223	843	2.07	750	6	
20	4200	CKK-84/6-6	366.8	0.62	1040	582	3039	249	921	2.30	850	6	
21	4200	CKK-168/6-12	336.7	1.48	1140	762	3655	389	1401	3.49	950	8	
22	4800	CKK-80/6-5	419	0.46	1060	542	2995	245	909	2.16	850	6	
23	4800	CKK-96/6-6	419.2	0.55	1060	582	3115	268	984	2.41	850	6	
24	4800	CKK-192/6-12	384.8	1.30	1200	712	3505	416	1542	3.78	1000	8	
25	1200	CKK-20/10-5	10	62.9	5.06	840	712	3429	151	627	0.88	700	6
26	1200	CKK-24/10-6		63	6.05	890	722	3459	162	660	1.02	750	6
27	1200	CKK-48/10-12		57.8	14.38	1140	832	4251	229	861	1.72	1000	6
28	1500	CKK-25/10-5		78.6	4.04	1040	602	3099	158	648	1.07	900	6
29	1500	CKK-30/10-6		78.7	4.84	1040	642	3219	172	690	1.20	900	6
30	1500	CKK-60/10-12		72.2	11.50	1090	792	3745	221	843	2.05	950	6
31	1800	CKK-30/10-5		94.3	3.37	1010	542	2919	164	666	1.19	850	6
32	1800	CKK-36/10-6		94.5	4.03	1010	582	3039	171	687	1.42	850	6
33	1800	CKK-72/10-12		86.6	9.60	1100	772	3685	250	924	2.25	950	6
34	2400	CKK-40/10-5		125.8	2.53	1020	562	2979	179	711	1.42	850	6
35	2400	CKK-48/10-6		126	3.02	1020	582	3039	186	732	1.65	850	6
36	2400	CKK-96/10-12		115.5	7.19	1160	702	3475	298	1134	2.59	1000	8
37	3000	CKK-45/10-4.5		157.3	1.82	1030	512	2829	185	729	1.58	850	6
38	3000	CKK-50/10-5		157.2	2.02	1020	522	2859	189	741	1.77	850	6
39	3000	CKK-60/10-6		157.5	2.42	1030	562	2979	212	810	1.83	900	6
40	3000	CKK-120/10-12		144.4	5.76	1170	692	3445	323	1209	2.87	1000	8
41	3600	CKK-54/10-4.5		189	1.51	1000	502	2799	201	777	1.74	850	6
42	3600	CKK-60/10-5		188.7	1.69	950	542	2919	212	810	1.79	750	6
43	3600	CKK-72/10-6	189	2.02	1040	542	2995	229	861	2.11	800	6	
44	3600	CKK-144/10-12	173.3	4.80	1140	702	3475	355	1305	3.18	950	8	
45	3600	CKK-156/10-13	173	5.20	1140	722	3535	377	1371	3.38	950	8	
46	3900	CKK-65/10-5	204.4	1.56	950	552	3025	218	828	1.91	750	6	
47	4000	CKK-67/10-5	210	1.52	1000	532	2965	221	837	1.96	850	6	
48	4000	CKK-80/10-6	210	1.81	1050	552	3025	252	930	2.17	950	6	
49	4000	CKK-160/10-12	193	4.32	1150	692	3445	378	1374	3.25	950	8	
50	4200	CKK-70/10-5	220.1	1.45	1010	522	2859	227	855	1.98	850	6	
51	4200	CKK-84/10-6	220.5	1.73	1070	532	2965	258	954	2.12	900	6	
52	4200	CKK-168/10-12	202.2	4.11	1150	672	3385	387	1401	3.44	950	8	
53	4800	CKK-72/10-4.5	252	1.14	1020	662	3279	241	897	2.17	800	6	
54	4800	CKK-80/10-5	251.6	1.26	1070	662	3355	251	933	2.32	900	6	



干式空心电抗器

Technical Parameters Table

CKK串联电抗器系列表 CKK Series Technical data for Series Reactor

序号 No	电容器 容量 kVAr	型 号 Type	系统 电压 kV	额定 电流 A	额定 电抗	外径 D mm	高度 H1 mm	总高 H mm	线圈 重量 kg	总重 kg	损耗值 kW	安装节 径 DC mm	支点 support Points	
55	4800	CKK-96/10-6	10	252	1.51	1110	702	3475	262	966	2.81	900	6	
56	4800	CKK-192/10-12		231	3.60	1210	682	3489	430	1518	3.81	1000	8	
57	5000	CKK-84/10-5		262	1.21	1020	682	3415	245	909	2.38	800	6	
58	5000	CKK-100/10-6		262.5	1.45	1120	682	3415	278	1014	2.62	950	6	
59	5000	CKK-200/10-12		241	3.45	1270	622	3309	421	1511	3.81	1050	8	
60	5100	CKK-204/10-12		245.4	3.40	1380	582	3189	441	1681	3.92	1150	8	
61	5400	CKK-90/10-5		283	1.12	1070	682	3415	263	969	2.45	900	6	
62	5400	CKK-108/10-6		283.5	1.34	1190	652	3325	308	1145	2.54	1000	6	
63	5400	CKK-216/10-12		260	3.20	1240	632	3369	448	1646	3.85	1050	8	
64	6000	CKK-90/10-4.5		315	0.91	1080	632	3265	266	978	2.26	900	6	
65	6000	CKK-100/10-5		315	1.01	1070	652	3325	275	1005	2.72	900	6	
66	6000	CKK-120/10-6		315	1.21	1130	682	3415	324	1212	2.97	950	8	
67	6000	CKK-240/10-12		289	2.88	1360	832	3939	475	1783	4.80	1200	8	
68	6048	CKK-252/10-12.5		290	3.00	1070	822	3835	570	2012	3.93	850	8	
69	6600	CKK-110/10-5		346	0.92	1090	652	3325	310	1170	2.70	950	8	
70	6600	CKK-132/10-6		346.5	1.10	1090	712	3505	336	1248	3.05	950	8	
71	6600	CKK-264/10-12		318	2.62	1370	812	3879	511	1891	4.99	1200	8	
72	7000	CKK-117/10-5		367	0.87	1100	642	3295	314	1182	2.74	900	8	
73	7000	CKK-140/10-6		367.5	1.04	1150	662	3355	352	1296	2.97	950	8	
74	7000	CKK-280/10-12		337	2.47	1390	782	3789	530	1948	4.94	1200	8	
75	7200	CKK-120/10-5		377.4	0.84	1140	632	3339	321	1203	2.88	950	8	
76	7200	CKK-144/10-6		378	1.01	1180	652	3325	354	1302	3.35	1000	8	
77	7200	CKK-288/10-12		347	2.40	1390	792	3969	540	1978	5.02	1200	8	
78	8000	CKK-134/10-5		420	0.76	1050	672	3385	324	1210	2.90	900	8	
79	8000	CKK-146/10-5.5		420	0.83	1090	682	3415	350	1290	3.37	950	8	
80	8000	CKK-160/10-6		420	0.91	1160	662	3355	374	1360	3.36	950	8	
81	8000	CKK-320/10-12		385	2.16	1440	762	3879	570	2136	5.00	1200	8	
82	8000	CKK-334/10-12.5		386	2.24	1460	762	3879	592	2134	5.12	1250	8	
83	8000	CKK-347/10-13		385.6	2.33	1450	752	3848	601	2161	5.09	1250	8	
84	8400	CKK-140/10-5		440	0.72	1110	622	3235	338	1248	3.10	950	8	
85	8400	CKK-168/10-6		441	0.86	1220	622	3309	370	1358	3.40	1000	8	
86	8400	CKK-336/10-12		404.3	2.06	1500	722	3759	574	2080	5.50	1300	8	
87	9000	CKK-150/10-5		472	0.67	1170	602	3175	353	1299	3.16	950	8	
88	9000	CKK-180/10-6		472.4	0.81	1170	652	3325	394	1422	3.50	950	8	
89	9000	CKK-360/10-12		434	1.92	1510	722	3759	604	2170	5.60	1300	8	
90	9300	CKK-372/10-12		427.8	2.02	1510	712	3729	620	2218	5.68	1300	8	
91	9500	CKK-190/10-6		470.2	0.86	1180	672	3459	434	1542	3.43	1000	8	
92	10000	CKK-167/10-5		524.1	0.61	1220	582	3189	361	1331	3.60	1000	8	
93	10000	CKK-199/10-6		481	0.86	1310	602	3249	415	1493	3.97	1100	8	
94	10000	CKK-200/10-6		525	0.73	1230	602	3249	412	1484	3.78	1000	8	
95	10000	CKK-391/10-12		439	2.03	1470	762	3879	647	2299	5.67	1250	8	
96	10000	CKK-400/10-12		482	1.73	1620	672	3609	640	2278	5.98	1450	8	
97	14400	CKK-240/10-5		756	0.42	1300	712	3579	475	1783	4.33	1100	8	
98	14400	CKK-576/10-12		693	1.20	1590	682	3639	821	2821	6.67	1400	8	
99	4800	CKK-80/35-5		35	73	15.13	1240	852	4458	304	1280	2.44	1050	8
100	4800	CKK-96/35-6			73	18.15	1290	902	4608	322	1334	2.99	1100	8
101	4800	CKK-192/35-12			67	43.20	1680	1072	5268	464	1856	4.77	1500	8
102	6000	CKK-100/35-5			91	12.10	1240	832	4398	302	1274	2.97	1050	8
103	6000	CKK-120/35-6	91		14.52	1300	872	4518	373	1487	2.94	1100	8	
104	6000	CKK-240/35-12	84		34.56	1740	972	4968	517	2023	5.35	1550	8	
105	7200	CKK-120/35-5	110		10.08	1320	712	4038	351	1421	2.92	1150	8	
106	7200	CKK-144/35-6	110		12.10	1460	742	4128	400	1568	3.53	1250	8	
107	7200	CKK-288/35-12	100		28.80	1760	952	4908	574	2194	5.60	1550	8	
108	7600	CKK-305/35-12	100		30.50	1760	962	4938	579	2193	5.70	1550	8	

CKK串联电抗器系列表 CKK Series Technical data for Series Reactor

序号 No	电容器 容量 kVAr	型 号 Type	系统 电压 kV	额定 电流 A	额定 电抗	外径 D mm	高度 H1 mm	总高 H mm	线圈 重量 kg	总重 kg	损耗值 kW	安装节 径DC mm	支点 Support Points
109	8400	CKK-140/35-5	35	127.3	8.64	1260	742	4128	347	1497	3.42	1100	8
110	8400	CKK-168/35-6		127.3	10.37	1230	792	4278	401	1571	3.40	1050	8
111	8400	CKK-336/35-12		117	24.69	1660	952	4908	603	2273	5.87	1450	8
112	9600	CKK-160/35-5		145.5	7.56	1220	752	4158	376	1496	3.66	1000	8
113	9600	CKK-192/35-6		145.5	9.08	1270	782	4248	416	1616	4.10	1100	8
114	9600	CKK-384/35-12		133.3	21.60	1620	892	4728	624	2336	6.20	1450	8
115	10000	CKK-167/35-5		152	7.26	1130	812	4338	393	1547	3.65	950	8
116	10000	CKK-200/35-6		152	8.71	1180	852	4458	436	1676	4.10	1000	8
117	10000	CKK-400/35-12		139	20.74	1720	882	4698	673	2491	6.42	1550	8
118	12000	CKK-200/35-5		182	6.05	1190	762	4188	426	1646	4.00	1000	8
119	12000	CKK-240/35-6		182	7.26	1240	792	4278	481	1811	4.35	1050	8
120	12000	CKK-480/35-12		167	17.28	1690	822	4518	684	2524	7.00	1500	8
121	14000	CKK-234/35-5		212	5.19	1170	762	4188	469	1775	4.08	1000	8
122	14000	CKK-280/35-6		212	6.22	1220	792	4278	530	1958	4.41	1050	8
123	14000	CKK-560/35-12		195	14.81	1640	842	4578	745	2707	7.77	1450	12
124	14400	CKK-240/35-5		218.2	5.04	1230	722	4068	471	1799	3.97	1000	8
125	14400	CKK-288/35-6		218.2	6.05	1240	782	4248	553	2027	4.30	1050	8
126	14400	CKK-576/35-12		200	14.40	1660	832	4548	796	2860	7.36	1450	12
127	16000	CKK-266/35-5		242	4.55	1270	712	4038	506	1886	4.93	1070	8
128	16000	CKK-320/35-6		242	5.45	1320	742	4128	567	2069	5.41	1120	8
129	16000	CKK-640/35-12		222	12.96	1600	934	4780	868	3168	9.04	1400	12
130	16800	CKK-280/35-5		255	4.32	1280	692	3978	521	1931	4.95	1080	8
131	16800	CKK-336/35-6		255	5.19	1330	752	4158	596	2252	5.43	1100	8
132	16800	CKK-672/35-12		234	12.30	1490	1004	4990	941	3387	8.41	1290	12
133	20000	CKK-334/35-5		304	3.62	1300	702	4008	592	2240	5.50	1100	8
134	20000	CKK-400/35-6		303	4.36	1350	762	4188	672	2480	6.02	1150	8
135	20000	CKK-800/35-12		278	10.37	1570	924	4750	1068	3768	8.91	1370	12
136	24000	CKK-400/35-5		364	3.03	1490	842	4504	650	2414	6.46	1290	8
137	24000	CKK-480/35-6		364	3.63	1550	872	4594	725	2647	6.91	1350	8
138	24000	CKK-960/35-12		334	8.64	1620	954	1828	1175	1383	10.60	1420	8*
139	25200	CKK-420/35-5		382	2.88	1540	812	4414	666	2366	6.72	1340	8
140	25200	CKK-504/35-6		382	3.46	1570	842	4504	764	2756	6.83	1370	8
141	25200	CKK-1008/35-12		350	8.23	1630	934	1808	1197	1405	10.78	1430	8*
142	40000	CKK-668/35-5		607	1.82	1530	884	4630	910	3294	9.40	1330	12
143	40000	CKK-800/35-6		606	2.18	1720	834	4554	1065	3759	9.33	1520	12
144	40000	CKK-1604/35-12	557	5.17	1860	1124	2148	1449	1657	16.59	1660	8*	
145	20000	CKK-400/66-6	66	167	14.40	1440	1554	2481	808	931	6.89	1250	6*
146	23333	CKK-350/66-4.5		190	9.70	1410	1372	2299	680	803	5.64	1200	6*
147	26000	CKK-520/66-6		200	13.00	1430	1784	3128	965	1354	7.53	1200	6*
148	60000	CKK-1200/66-6		488.8	5.03	1630	1364	2391	1633	1819	9.10	1400	8*

说 明:

- 所有串联电抗器的短时电流为额定电流的25倍，持续时间为3秒。
 - 标有*的产品安装方式为三相平放，总重量为单相重量，其余产品安装方式为三相垂直叠放，总重量为三相重量。
 - 制造厂还可以根据用户提出的特殊要求，进行设计制造。
 - 以上数据供用户设计部门参考，制造厂将保留对以上数据的变动权利。
- Short-time current is 25 times rated current, duration 3s.
 - For items marked * , three phases are mounted in a level, the total weight is for one phase; for other items, three phases are mounted in stack, the total weight is for three phases;
 - Special requirements can be met;
 - above Data are for reference only, BPEG reserves the right to change and update.



干式空心电抗器

Technical Parameters Table

XKK 限流电抗器系列表 XKK Series Technical Data for Current-Limiting Reactor

型号 Type	额定电压 (kV)	额定电流 (A)	电抗率 %	动稳定 电流 (kA)	短时 电流 4s (kA)	额定 电感 (mH)	单相 容量 (kVA)	单相 损耗 (kW)	线圈 外径 D(mm)	线圈 高度 H1 (mm)	下瓷座 高度H2 (mm)	瓷座中 心直径 Dc (mm)	支点 数 Support points	单相 重量 (kg)
XKK-6-200-3	6	200	3	12.8	5	1.654	20.8	1.278	970	602	521	800	3	109
XKK-6-200-4			4			2.205	27.7	1.542	1020	662	521	850	3	126
XKK-6-200-5			5			2.757	34.6	1.789	1020	722	521	850	3	141
XKK-6-200-6			6			3.308	41.6	2.015	1070	762	521	900	3	156
XKK-6-200-8			8			4.411	55.4	2.455	1070	872	521	900	3	182
XKK-6-200-10			10			5.513	69.3	2.834	1170	912	597	1000	3	207
XKK-10-200-3	10	200	3	12.8	5	2.757	34.6	1.780	1070	702	521	900	3	141
XKK-10-200-4			4			3.676	46.2	2.165	1070	802	521	900	3	165
XKK-10-200-5			5			4.594	57.7	2.525	1070	892	521	900	3	187
XKK-10-200-6			6			5.513	69.3	2.834	1170	912	597	1000	3	207
XKK-10-200-8			8			7.351	92.4	3.425	1270	982	597	1100	3	247
XKK-10-200-10			10			9.189	115.5	3.971	1320	1072	671	1150	3	281
XKK-6-300-3	6	300	3	19.1	7.5	1.103	31.2	1.844	970	582	521	800	3	110
XKK-6-300-4			4			1.470	41.6	2.224	1020	632	521	850	3	127
XKK-6-300-5			5			1.838	52.0	2.335	1020	742	521	850	3	156
XKK-6-300-6			6			2.205	62.4	2.626	1070	772	521	900	3	172
XKK-6-300-8			8			2.940	83.1	3.181	1120	852	597	950	3	202
XKK-6-300-10			10			3.676	103.9	3.691	1170	922	597	1000	3	230
XKK-10-300-3	10	300	3	19.1	7.5	1.838	52.0	2.573	1020	702	521	850	3	141
XKK-10-300-4			4			2.450	69.3	2.811	1120	782	597	950	3	183
XKK-10-300-5			5			3.063	86.6	3.272	1120	872	597	950	3	207
XKK-10-300-6			6			3.676	103.9	3.691	1170	922	597	1000	3	230
XKK-10-300-8			8			4.901	138.6	4.486	1220	1032	597	1050	3	273
XKK-10-300-10			10			6.126	173.2	5.186	1320	1092	671	1150	3	313

型号 Type	额定电压 (kV)	额定电流 (A)	电抗率 %	动稳定 电流 (kA)	短时 电流 4s (kA)	额定 电感 (mH)	单相 容量 (kVA)	单相 损耗 (kW)	线圈 外径 D(mm)	线圈 高度 H1 (mm)	下瓷座 高度H2 (mm)	瓷座中 心直径 Dc (mm)	支点 数 Support points	单相 重量 (kg)
XKK-6-400-3	6	400	3	25.5	10	0.827	41.6	1.910	990	542	521	800	3	135
XKK-6-400-4			4			1.103	55.4	2.296	1040	582	521	850	3	155
XKK-6-400-5			5			1.378	69.3	2.649	1040	632	521	850	3	174
XKK-6-400-6			6			1.654	83.1	2.979	1090	662	521	900	3	192
XKK-6-400-8			8			2.205	110.9	3.591	1140	732	597	950	3	225
XKK-6-400-10			10			2.757	138.6	4.165	1140	812	597	950	3	254
XKK-10-400-3	10	400	3	25.5	10	1.378	69.3	2.649	1140	602	597	950	3	177
XKK-10-400-4			4			1.838	92.4	3.185	1140	672	597	950	3	205
XKK-10-400-5			5			2.297	115.5	3.688	1140	742	597	950	3	230
XKK-10-400-6			6			2.757	138.6	4.151	1190	782	597	1000	3	257
XKK-10-400-8			8			3.676	184.8	5.041	1190	902	597	1000	3	303
XKK-10-400-10			10			4.594	230.9	5.837	1240	952	597	1050	3	341
XKK-6-600-4	6	600	4	38.3	15	0.735	83.1	2.957	1060	532	521	900	3	179
XKK-6-600-5			5			0.919	103.9	3.395	1060	582	521	900	3	199
XKK-6-600-6			6			1.103	124.7	3.809	1110	602	597	950	3	217
XKK-6-600-8			8			1.470	166.3	4.443	1170	612	597	1000	3	268
XKK-6-600-10			10			1.838	207.8	5.115	1170	672	597	1000	3	300
XKK-10-600-4			10			600	4	38.3	15	1.225	138.6	4.077	1160	602
XKK-10-600-5	5	1.531		173.2	4.585		1160			632	597	1000	3	274
XKK-10-600-6	6	1.838		207.8	5.115		1170			672	597	1000	3	300
XKK-10-600-8	8	2.450		277.1	6.151		1220			732	597	1050	3	349
XKK-10-600-10	10	3.063		346.4	6.892		1270			812	597	1100	3	414

干式空心电抗器

Technical Parameters Table

技 术 参 数



XKK 限流电抗器系列表 XKK Series Technical Data for Current-Limiting Reactor

型号 Type	额定电压 (kV)	额定电流 (A)	电抗率 %	动稳定 电流 (kA)	短时 电流 4s (kA)	额定 电感 (mH)	单相 容量 (kVA)	单相 损耗 (kW)	线圈 外径 D(mm)	线圈 高度 H1 (mm)	下瓷座 高度H2 (mm)	瓷座中 心直径 Dc (mm)	支点 数 Support points	单相 重量 (kg)
XKK-6-800-4	6	800	4	51	20	0.551	110.9	3.430	1080	512	521	900	3	208
XKK-6-800-5			5			0.689	138.6	3.794	1080	552	521	900	3	235
XKK-6-800-6			6			0.827	166.3	4.254	1130	582	597	950	3	261
XKK-6-800-8			8			1.103	221.7	5.219	1190	592	597	1000	3	306
XKK-6-800-10			10			1.378	277.1	5.779	1240	632	597	1050	3	356
XKK-10-800-4	10	800	4	51	20	0.919	184.8	4.556	1180	582	597	1000	3	275
XKK-10-800-5			5			1.149	230.9	5.078	1230	622	597	1050	3	322
XKK-10-800-6			6			1.378	277.1	5.779	1240	632	597	1050	3	356
XKK-10-800-8			8			1.838	369.5	7.012	1290	692	597	1100	3	427
XKK-10-800-10			10			2.297	461.9	7.827	1290	772	597	1100	3	497
XKK-6-1000-4	6	1000	4	63.8	25	0.441	138.6	3.836	1100	554	521	900	3	249
XKK-6-1000-5			5			0.551	173.2	4.398	1150	574	597	950		275
XKK-6-1000-6			6			0.662	207.8	4.795	1150	614	597	950	3	308
XKK-6-1000-8			8			0.882	277.1	5.780	1200	684	597	1050	3	364
XKK-6-1000-10			10			1.103	346.4	6.687	1260	684	597	1100	3	429
XKK-10-1000-12	10	1000	12	63.8	25	1.323	415.7	7.483	1310	704	671	1150	3	475
XKK-10-1000-4			4			0.735	230.9	5.158	1200	634	597	1050	3	332
XKK-10-1000-5			5			0.919	288.7	5.751	1250	674	597	1050	3	383
XKK-10-1000-6			6			1.103	346.4	6.687	1260	684	597	1100	3	429
XKK-10-1000-8			8			1.470	461.9	7.789	1260	764	597	1100	3	510
XKK-10-1000-10	10	1.838	577.4	8.963	1310	824	671	1150	3	578				
XKK-10-1000-12	12	2.205	692.8	9.910	1310	884	671	1150	3	651				

型号 Type	额定电压 (kV)	额定电流 (A)	电抗率 %	动稳定 电流 (kA)	短时 电流 4s (kA)	额定 电感 (mH)	单相 容量 (kVA)	单相 损耗 (kW)	线圈 外径 D(mm)	线圈 高度 H1 (mm)	下瓷座 高度H2 (mm)	瓷座中 心直径 Dc (mm)	支点 数 Support points	单相 重量 (kg)
XKK-6-1500-4	6	1500	4	95.6	37.5	0.294	207.8	4.955	1230	694	597	1100	4	337
XKK-6-1500-5			5			0.368	259.8	5.714	1230	754	597	1100	4	373
XKK-6-1500-6			6			0.441	311.8	6.405	1370	754	671	1230	4	423
XKK-6-1500-8			8			0.588	415.7	7.500	1430	774	671	1300	4	501
XKK-6-1500-10			10			0.735	519.6	8.636	1480	824	821	1300	4	570
XKK-6-1500-12	12	0.882	623.5	9.700	1530	874	821	1350	4	628				
XKK-10-1500-4	10	1500	4	95.6	37.5	0.490	346.4	6.691	1430	724	671	1300	4	447
XKK-10-1500-5			5			0.613	433.0	7.686	1430	784	671	1300	4	511
XKK-10-1500-6			6			0.735	519.6	8.636	1480	824	821	1300	4	570
XKK-10-1500-8			8			0.980	692.8	10.398	1530	914	821	1350	4	649
XKK-10-1500-10			10			1.225	866.0	11.932	1680	934	821	1500	4	760
XKK-10-1500-12	12	1.470	1039.2	13.002	1690	1014	821	1500	4	860				
XKK-6-2000-4	6	2000	4	102	40	0.221	277.1	6.029	1250	736	597	1050	4	408
XKK-6-2000-5			5			0.276	346.4	6.923	1310	776	671	1100	4	458
XKK-6-2000-6			6			0.331	415.7	7.576	1410	796	671	1250	4	524
XKK-6-2000-8			8			0.441	554.3	9.083	1460	856	821	1250	4	595
XKK-6-2000-10			10			0.551	692.8	10.217	1510	906	821	1350	4	686
XKK-6-2000-12	12	0.662	831.4	11.198	1570	906	821	1400	4	775				
XKK-10-2000-4	10	2000	4	102	40	0.368	461.9	7.914	1470	806	821	1300	4	561
XKK-10-2000-5			5			0.459	577.4	9.060	1470	866	821	1300	4	625
XKK-10-2000-6			6			0.551	692.8	10.191	1520	896	821	1350	4	680
XKK-10-2000-8			8			0.735	923.8	12.196	1570	976	821	1400	4	795
XKK-10-2000-10			10			0.919	1154.7	13.705	1730	946	897	1550	4	925
XKK-10-2000-12	12	1.103	1385.6	15.416	1730	1016	897	1550	4	1012				



干式空心电抗器

Technical Parameters Table

XKK 限流电抗器系列表 XKK Series Technical data for current-limiting Reactor

型号 Type	额定电压 (kV)	额定电流 (A)	电抗率 %	动稳定 电流 (kA)	短时 电流 4s (kA)	额定 电感 (mH)	单相 容量 (kVA)	单相 损耗 (kW)	线圈 外径 D(mm)	线圈 高度 H1 (mm)	下瓷座 高度H2 (mm)	瓷座中 心直径 Dc (mm)	支点 数 Support points	单相 重量 (kg)		
XKK-6-2500-4	6	2500	4	128	50	0.176	346.4	6.803	1340	716	671	1150	4	470		
XKK-6-2500-5			5			0.221	433.0	7.511	1390	756	671	1200	4	540		
XKK-6-2500-6			6			0.265	519.6	8.258	1440	776	821	1250	4	601		
XKK-6-2500-8			8			0.353	692.8	10.346	1540	796	821	1350	4	688		
XKK-6-2500-10			10			0.441	866.0	11.910	1540	856	821	1350	4	763		
XKK-6-2500-12			12			0.529	1039.2	13.295	1640	876	821	1450	4	845		
XKK-10-2500-4	10	2500	4			128	50	0.294	577.4	9.282	1540	756	821	1350	4	637
XKK-10-2500-5			5					0.368	721.7	10.627	1540	806	821	1350	4	704
XKK-10-2500-6			6					0.441	866.0	11.910	1540	856	821	1350	4	763
XKK-10-2500-8			8					0.588	1154.7	13.871	1640	906	821	1450	4	904
XKK-10-2500-10			10					0.735	1443.4	15.359	1750	946	897	1550	4	1051
XKK-10-2500-12			12					0.882	1732.1	16.967	1750	1006	897	1550	4	1169
XKK-6-3000-4	6	3000	4	128	50			0.147	415.7	7.617	1410	686	671	1200	4	518
XKK-6-3000-5			5					0.184	519.6	8.657	1410	736	671	1200	4	581
XKK-6-3000-6			6					0.221	623.5	9.571	1510	756	821	1300	4	674
XKK-6-3000-8			8					0.294	831.4	11.397	1610	786	821	1400	4	773
XKK-6-3000-10			10					0.368	1039.2	12.834	1670	806	821	1500	4	868
XKK-6-3000-12			12					0.441	1247.1	14.212	1680	856	821	1500	4	962
XKK-10-3000-4	10	3000	4			128	50	0.245	692.8	10.158	1670	716	821	1500	4	714
XKK-10-3000-5			5					0.306	866.0	11.630	1670	766	821	1500	4	785
XKK-10-3000-6			6					0.368	1039.2	12.830	1670	806	821	1500	4	867
XKK-10-3000-8			8					0.490	1385.6	14.986	1670	906	821	1500	4	1027
XKK-10-3000-10			10					0.613	1732.1	16.707	1780	936	897	1600	4	1180
XKK-10-3000-12			12					0.735	2078.5	18.842	1780	1006	897	1600	4	1294

型号 Type	额定电压 (kV)	额定电流 (A)	电抗率 %	动稳定 电流 (kA)	短时 电流 4s (kA)	额定 电感 (mH)	单相 容量 (kVA)	单相 损耗 (kW)	线圈 外径 D(mm)	线圈 高度 H1 (mm)	下瓷座 高度H2 (mm)	瓷座中 心直径 Dc (mm)	支点 数 Support points	单相 重量 (kg)		
XKK-6-3500-4	6	3500	4	161	63	0.126	485.0	8.907	1460	908	821	1250	4	616		
XKK-6-3500-5			5			0.158	606.2	9.904	1570	928	821	1350	4	692		
XKK-6-3500-6			6			0.189	727.5	11.108	1570	968	821	1350	4	746		
XKK-6-3500-8			8			0.252	969.9	12.681	1670	1038	821	1450	4	896		
XKK-6-3500-10			10			0.315	1212.4	14.560	1770	1078	897	1550	4	1012		
XKK-6-3500-12			12			0.378	1454.9	16.054	1820	1118	897	1600	4	1122		
XKK-10-3500-4	10	3500	4			161	63	0.210	808.3	11.808	1670	958	821	1450	4	792
XKK-10-3500-5			5					0.263	1010.4	13.091	1720	1028	821	1500	4	917
XKK-10-3500-6			6					0.315	1212.4	14.560	1770	1078	897	1550	4	1012
XKK-10-3500-8			8					0.420	1616.6	16.585	1820	1188	897	1600	4	1231
XKK-10-3500-10			10					0.525	2020.7	19.568	1940	1188	971	1750	4	1376
XKK-10-3500-12			12					0.630	2424.9	22.323	1990	1218	971	1800	4	1471
XKK-6-4000-4	6	4000	4	204	80			0.110	554.3	9.345	1580	888	821	1400	4	671
XKK-6-4000-5			5					0.138	692.8	10.435	1580	938	821	1400	4	761
XKK-6-4000-6			6					0.165	831.4	11.531	1680	948	821	1450	4	826
XKK-6-4000-8			8					0.221	1108.5	13.151	1700	1028	821	1500	4	980
XKK-6-4000-10			10					0.276	1385.6	15.199	1760	1068	897	1550	4	1128
XKK-6-4000-12			12					0.331	1662.8	17.059	1760	1138	897	1550	4	1237
XKK-10-4000-4	10	4000	4			204	80	0.184	923.8	12.413	1680	978	821	1500	4	869
XKK-10-4000-5			5					0.230	1154.7	14.175	1700	1048	821	1500	4	1000
XKK-10-4000-6			6					0.276	1385.6	15.199	1760	1068	897	1550	4	1128
XKK-10-4000-8			8					0.368	1847.5	18.355	1860	1138	897	1650	4	1306
XKK-10-4000-10			10					0.459	2309.4	20.754	1960	1198	971	1750	4	1498
XKK-10-4000-12			12					0.551	2771.3	23.246	2060	1238	971	1850	4	1644

干式空心电抗器

Technical Parameters Table

技 术 参 数



型 号 Type	额定 电压 (kV)	额定 电流 (A)	电抗率 %	动稳 定 电 流 (kA)	短时 电 流 4s (kA)	额定 电 感 (mH)	单 相 容 量 (kVA)	单 相 损 耗 (kW)	线 圈 外 径 D(mm)	线 圈 高 度 H1 (mm)	下 瓷 座 高 度 H2 (mm)	瓷 座 中 心 直 径 Dc (mm)	支 点 数 Support points	单 相 重 量 (kg)
XKK-6-5000-4	6	5000	4	204	80	0.088	692.8	9.828	1700	908	821	1550	4	821
XKK-6-5000-5			5			0.110	866.0	11.106	1760	948	897	1600	4	920
XKK-6-5000-6			6			0.132	1039.2	12.482	1760	998	897	1600	4	991
XKK-6-5000-8			8			0.176	1385.6	14.258	1810	1098	897	1650	4	1204
XKK-6-5000-10			10			0.221	1732.1	16.704	1900	1168	971	1700	4	1406
XKK-6-5000-12			12			0.265	2078.5	18.797	1950	1218	971	1750	4	1536
XKK-10-5000-4	10	5000	4	204	80	0.147	1154.7	12.754	1810	1018	821	1650	4	1096
XKK-10-5000-5			5			0.184	1443.4	14.704	1810	1080	821	1650	4	1214
XKK-10-5000-6			6			0.221	1732.1	16.704	1900	1168	971	1700	4	1406
XKK-10-5000-8			8			0.294	2309.4	19.731	1950	1278	971	1750	6	1659
XKK-10-5000-10			10			0.368	2886.8	22.508	2050	1338	971	1850	6	1862
XKK-10-5000-12			12			0.441	3464.1	25.062	2160	1368	971	1950	6	2075

型 号 Type	额定 电压 (kV)	额定 电流 (A)	电抗率 %	动稳 定 电 流 (kA)	短时 电 流 4s (kA)	额定 电 感 (mH)	单 相 容 量 (kVA)	单 相 损 耗 (kW)	线 圈 外 径 D(mm)	线 圈 高 度 H1 (mm)	下 瓷 座 高 度 H2 (mm)	瓷 座 中 心 直 径 Dc (mm)	支 点 数 Support points	单 相 重 量 (kg)	
XKK-35-100-1.5	35	100	1.5	23	9	9.55	30	0.9	1250	752	724	1050	3	283	
XKK-35-100-3			3	7.65	3	18.94	59.5	2.56	940	742	724	750	3	187	
XKK-35-100-5			5	6.38	2.5	32.16	101	3.5	1.40	772	724	900	3	209	
XKK-35-100-6			6	6.38	2.5	38.59	121	3.9	1140	872	724	950	3	289	
XKK-35-100-10			10	6.38	2.5	64.32	202	5.5	1250	932	724	1050	3	354	
XKK-35-200-12			200	12	12.75	5	38.59	485	9.2	1170	1032	724	1000	3	516
XKK-35-400-12			400	12	25.5	10	19.3	970	13.3	1480	772	724	1300	4	844
XKK-35-700-12			700	12	38.25	15	11.03	1698	17.9	1580	1084	800	1400	4	1120
XKK-35-1000-8			1000	8	63.75	25	5.15	1617	16.1	1680	1044	874	1450	4	1114

注:

1. 限流电抗器按三相平放设计，单相重量指线圈重量。
2. 制造厂还可以根据用户提出的要求进行设计制造。
3. 以上数据供用户及设计部门参考，制造厂将保留对以上数据的变动权利。

(Note):

1. above Data are mounted for three-phase in level, weight of one phase is the weight of one coil.
2. Special requirements can be met.
3. above Data are for reference only, BPEG reserves the right to change and update.

LKK(T) 滤波(可调)电抗器系列表 LKK(T)Series Technical Data for Filter(adjustable)Reactor

序号 No	型号 Type	系统电压 (kV)	额定容量 (kVA)	额定电流 (A)	额定电感 (mH)	调谐次数	线圈外径 (mm)	安装节径 (mm)	线圈高度 (mm)	总高 (mm)	总重 (kg)	安装方式 Installation
1	LKKT-6-500-0.21	6	17	500	0.21	11+H	1460	1300	442	2184	488	三相平放 Level Installation
2	LKKT-6-237-1.88		33	237	1.88	7	1450	1300	542	2285	531	
3	LKKT-6-300-1.96		55	300	1.96	7	1520	1350	592	2605	725	
4	LKKT-6-365-1.83		77	365	1.83	5	1550	1350	552	2464	623	
5	LKKT-6-400-2.47		124	400	2.47	5	1660	1500	602	2625	860	
6	LKKT-6.3-140-1.9	6.3	12	140	1.87	7	1440	1250	552	2423	508	三相平放 Level Installation
7	LKKT-6.3-410-0.4		19	410	0.36	13	1260	1100	502	2204	524	
8	LKKT-6.3-406-0.5		26	406	0.5	11	1310	1100	552	2304	599	
9	LKKT-6.3-220-2.5		37	220	2.45	5	1500	1300	622	2594	698	
*10	LKK-6.3-35-0.95		0.36	35	0.948	HP	930	750	632	3189	511	
*11	LKK-6.3-125-0.77	3.8	125	0.767	11	930	750	672	3309	559		
*12	LKK-6.3-55-6.97	6.7	55	6.967	6	930	750	642	3219	559		
13	LKKT-10-101-1.8	10	5.8	101	1.8	11	1100	900	482	2191	245	三相平放 Level Installation
14	LKKT-10-106-4.45		15.7	106	4.45	7	1020	850	462	2075	246	
15	LKKT-10-108-8.7		32	108	8.72	5	1070	900	562	2351	309	
16	LKKT-12-624-14	12	1656	624	13.54	2	1690	1500	712	2884	1832	三相平放 Level Installation
17	LKKT-18.2-146-21	18.2	137	146	20.48	4	1430	1250	602	1980	592	
18	LKKT-18.2-347-5		177	347	4.69	5	1310	1150	442	2155	564	
19	LKKT-18.2-315-17		538	315	17.26	3	1620	1450	612	2645	976	
20	LKKT-18.2-412-32		1709	412	32.05	2	1740	1550	792	3080	1640	
21	LKKT-35-100-30.6	35	96	100	30.6	5	1340	1200	503	2148	503	
22	LKKT-35-102-47.8		156	102	47.8	4	1440	1300	587	2228	587	
23	LKKT-35-104-89.4		304	104	89.44	3	1700	1500	818	2538	818	
24	LKKT-35-105-101		350	105	101.07	3	1920	1750	644	2922	1000	
25	LKKT-35-100-291		915	100	291.1	2	2010	1800	864	3478	1700	
26	LKKT-35-155-177	1334	155	176.7	2	2210	2050	884	4307	1921		
27	LKKT-110-72-62	110	101	72	61.984	11	1830	1650	942	4225	1161	
28	LKKT-110-56-121		120	56	121.36	HP	2060	1850	1092	4409	1076	
29	LKKT-110-64-191		246	64	190.99	7	1830	1650	932	4165	1256	
30	LKKT-110-45-646		411	45	645.53	4	2080	1850	1292	4706	1025	
31	LKKT-110-64-382		491	64	381.2	5	2320	2150	1042	4154	1517	
31	LKKT-110-110-35		134	110	35.38	11	1680	1520	702	4444	715	
33	LKKT-110-110-58		220	110	57.81	HP	1880	1600	812	4614	943	
34	LKKT-110-105-98		341	105	98.34	7	2080	1800	928	4799	1529	
35	LKKT-110-105-212		734	105	212.02	5	2530	2250	1098	5199	1984	
*36	LKK-220-308-14		220	417	308	14.0	12	1230	1020	1904	4439	1312

注:

- 电感调节方式一般为调节两只线圈之间距离, 调节范围一般在 $\pm 5\%$ 连续可调, 制造厂也可按用户提出的特殊要求设计;
- 序号带 * 的为电感不可调式滤波电抗器;
- 系列表所列数据仅供用户参考选用。

(Note):

- Generally,model of adjustable inductance is adjust distance of two coils, the variation in inductance of coils is $\pm 5\%$ and can be adjustable contin 'ually. Special requirements can also be met.
- The items marked * are the Filter Reators with fixed inductance.
- above Data are for reference only, BPEG reserves the right to change and update.

SYKK 试验电抗器系列表 SYKK Series Technical Data for Test Lad Reactor

序号 No	型号 Type	系统电压 (kV)	冲击电流 (A)	额定电感 (mH)
1	SYKK - 110 - 100 - 1591.55	110	100	1591.55
2	SYKK - 110 - 1250 - 15.92	110	1250	15.92
3	SYKK - 110 - 1250 - 50.93	110	1250	50.93
4	SYKK - 110 - 1250 - 66.85	110	1250	66.85
5	SYKK - 220 - 2100 - 256	220	2100	256
6	SYKK - 220 - 3500 - 128	220	3500	128
7	SYKK - 220 - 8485 - 16	220	8485	16
8	SYKK - 220 - 20000 - 8	220	20000	8

FKK 分裂电抗器系列表 FKK Series Technical Data for Splitting Reactor

序号 No	型号 Type	系统电压 kV	额定电流 A	额定电感 (mH)	耦合系数	动稳定电流 (kA)	短时电流 4s (kA)	单相容量 (kVA)	单相线圈重量 (kg)
1	FKK - 10 - 2 x 1500 - 8	10	2 x 1500	2 x 0.980	0.3	2 x 95.6	2 x 37.5	2 x 693	1445
2	FKK - 10 - 2 x 2000 - 4	10	2 x 2000	2 x 0.368	0.3	2 x 102	2 x 40	2 x 462	1258
3	FKK - 10 - 2 x 2000 - 8	10	2 x 2000	2 x 0.735	0.3	2 x 102	2 x 40	2 x 924	1752
4	FKK - 10 - 2 x 2500 - 4	10	2 x 2500	2 x 0.294	0.3	2 x 128	2 x 50	2 x 577	1344
5	FKK - 10 - 2 x 2500 - 8	10	2 x 2500	2 x 0.588	0.3	2 x 128	2 x 50	2 x 1155	2041
6	FKK - 10 - 2 x 3000 - 4	10	2 x 3000	2 x 0.245	0.3	2 x 128	2 x 50	2 x 693	1492
7	FKK - 10 - 2 x 3000 - 8	10	2 x 3000	2 x 0.490	0.3	2 x 128	2 x 50	2 x 1386	2254
8	FKK - 10 - 2 x 3000 - 10	10	2 x 3000	2 x 0.613	0.3	2 x 128	2 x 50	2 x 1732	2522

FLQ 防雷线圈系列表 FLQ Series Technical Data for Lightning Coil

序号No	型号 Type	系统电流(A)	额定电感 (mH)	雷电冲击耐压 (kV)
1	FLQ - 100 - 0.1	100	0.1	150
2	FLQ - 100 - 0.2		0.2	150
3	FLQ - 100 - 0.3		0.3	150
4	FLQ - 100 - 0.5		0.5	300 或 400
5	FLQ - 100 - 1.0		1.0	400 或 600
6	FLQ - 200 - 0.1	200	0.1	150
7	FLQ - 200 - 0.2		0.2	150
8	FLQ - 200 - 0.3		0.3	300
9	FLQ - 200 - 0.5		0.5	400 或 600
10	FLQ - 200 - 1.0		1.0	600 或 800
11	FLQ - 500 - 0.1	500	0.1	150
12	FLQ - 500 - 0.2		0.2	150 或 300
13	FLQ - 500 - 0.3		0.3	300 或 400
14	FLQ - 500 - 0.5		0.5	400 或 600
15	FLQ - 500 - 1.0		1.0	800 或 1000

ZJKK 中性点接地电抗器系列表 ZJKK Series Technical Data for Neutral Grounding Reactor

序号 No	型号 Type	系统电压等级 (kV)	额定电流 (A)	额定短时电流及时间 (A/s)	额定阻抗 ()	阻抗抽头
1	ZJKK - 100 - 550	330	100	200/10	550	495/605
2	ZJKK - 12 - 230	330	12	200/10	230	107/253
3	ZJKK - 30 - 900	500	30	300/10	900	800/1000
4	ZJKK - 100 - 5	500	100	9000/10	5	/

注:

1. 制造厂还可以根据用户提出的特殊要求进行设计制造;
2. 以上数据仅供用户参考选用, 制造厂将保留对以上数据的变动权利。

(Note):

1. Special requirements can be met;
2. above Data are for reference only, BPEG reserves the right to change and update.



BPEG

北京电力设备总厂

BEIJING POWER EQUIPMENT GROUP

地址：中国·北京·良乡, 102401

ADD: Liangxiang, Beijing 102401, China

TEL: 86-10-69352050-2610, 2630

FAX: 86-10-69363084, 69352050-2610

E-MAIL: sales@bpeg-usa.com

www.bpeg-usa.com



版本号：2003 版 北京

Version of 2003, Beijing